



Grouse Hollow News

SPRING 2013



New Acres for FFI

BY JIM KADERA

A few signature signings in December more than doubled the woodlands acreage owned by Forests Forever Inc. The non-profit that owns and manages the 140-acre Hopkins Demonstration Forest south of Oregon City acquired 208 acres in Polk County without needing to pay cash or take out a mortgage. The property was deeded to Forests Forever by another non-profit, Pedee Woodlands Inc., which was dissolved after the transfer.

Pedee Woodlands is located off Kings Valley Highway about 17 miles south of Dallas. It was founded by Bob Phillips, a one-time Forests Forever board member, from part of a tree farm purchased in 1989 by Phillips and wife Sharon. Bob Phillips, who died of prostate cancer in 2008, envisioned Pedee Woodlands becoming like Hopkins, an educational resource for children, woodland owners and others.

However, Pedee lacked a diversified board of directors to plan and manage

the property. And there was insufficient interest from others in Polk County to get involved. After years of inactivity, the Oregon Department of Justice, which oversees non-profit operations, sought dissolution of the Pedee non-profit.

Sharon Phillips, who lives in Portland, suggested last year that Forests Forever take over the property. "After Bob died, I learned some of the board members left, and nothing was being done there," she said.

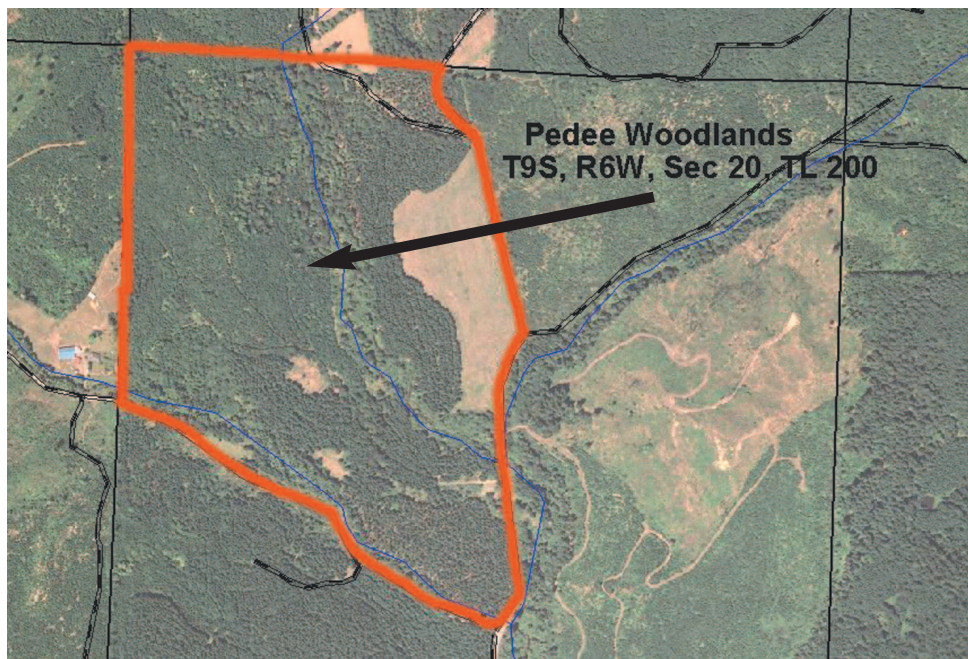
Led by Executive Director Ken Everett, the Forests Forever board discussed and accepted the proposal. Several board members visited the property before voting on accepting it. Sharon Phillips retained ownership of adjacent Boomer Mountain tree farm

which never was part of the non-profit.

A 2006 timber cruise showed a volume of 445,000 board feet of mostly Douglas fir. Some of the fir now is 30 to 40 years old, Everett said. The land also has red cedar, big leaf maple, and valley ponderosa pine. Located about 80 miles southwest of Oregon City, the site is not convenient to Everett and Forests Forever board members. But with infrequent trips to Pedee expected, they said it poses no problem. Pedee has no buildings, and even when an education program is developed the public use is expected to be less intense than at Hopkins.

"Bob did a lot of thinning young stands, and he cleared brush from underproductive ground and reforested. So the Pedee timber is in good condition," Everett said. "This year we need to go there and put together a

.....continued on back page



Inside

Digging-in at Forest Hall

Friends of Hopkins

In Remembrance

Iron Ranger

Calendar of Events

Digging-in at Forest Hall

BY JIM KADERA

More landscaping improvements are coming to Hopkins Demonstration Forest this year. And thanks to the Oregon State University Extension Master

Gardener™ program, the labor and most materials will be donated. The work will include installing irrigation for the native plant garden completed last year near Hopkins Hall, and continuing to plant shrubs and short-growing trees around Forest Hall.

Carol Koshkarian, a Beaver Creek master gardener, again will coordinate the labor effort. About 10 of the trained gardeners, a mix of veterans

from local salal, wild rose and Oregon grape to some from elsewhere in the state, such as varieties from the Kalmiopsis region of southwestern Oregon.

All of the plantings match the “fire-wise” criteria recommended by Oregon Department of Forestry to minimize wildfire hazards, Delano noted. For example, a cultivar of our native western redcedar that matures at only 20 feet tall will be among plantings near Forest Hall. The first plants: three redcedar cultivars and



Contact Info

Forests Forever, Inc.

P.O. Box 1320, Oregon City, OR 97045
Business Office Phone: 503-655-5524
Business Fax: 503-824-5527

Hopkins Demonstration Forest

16750 S. Brockway Rd., Oregon City, OR 97045
Phone: 503-632-2150



Follow us on facebook

www.demonstrationforest.org

Forests Forever Board of Directors

Ken Everett, *Executive Director*, Colton
Mike Bondi, *Board Chair*, Lake Oswego
Mike McCoy, *Treasurer*, West Linn
Glenn Ahrens, *Secretary*, Oregon City
Fran Cafferata Coe, Hillsboro
Mary Castle, Oregon City
Mike Daly, Mulino
Rick Gruen, West Linn
Mike Haaskin, Molalla
Dave Hill, Oregon City
Jim Kadera, Oregon City
Mike Piazza, West Linn
Vacant Community Position

Staff

Tim DeLano, *Community Forestry Educator*
Don Chase, *Special Projects*

Forest Hosts

Margi Wyatt, Marcelino Maceda

Grouse Hollow News

Writers & Editors: Jim Kadera, Tim DeLano
Layout & Design Kim Minten, Minten Graphics



PHOTO: TIM DELANO

A hearty crew of volunteers planted the first few shrubs into the new ground outside Forest Hall. Subsequent plantings this spring will continue to fill in the bare ground.

and first-year interns, usually do the work. “Carol has done an outstanding job. She is the reason this project took off,” said Tim DeLano, the educator and community outreach coordinator at Hopkins. “The Master Gardener volunteers worked about 200 hours in the landscape last year,” he said.

Koshkarian said the Clackamas County Master Gardener chapter has donated \$500 for irrigation supplies plus \$2,000 to buy plants and mulch for the work outside Forest Hall.

“We’ve had no costs until now,” Delano said. “All of the plants for the garden were donated by local nurseries or transplanted from our forest. We look forward this spring to seeing some of the first blooms.” Plants vary

five vine maples were placed near Forest Hall in January.

A change in access into the building is problematic to a proposed rain collection system for plant irrigation. The rain garden must be relocated or dropped from the landscape developments, Delano pointed out.

An effort will be made to complete the flat stone patio outside the Forest Hall back door this year. When the stone is laid and other work done, visitors to the patio will have a view down the Buckner Creek drainage toward the Mulino prairie and as far as the coast range on a clear day. The patio will be part of the ambiance to attract groups to rent Forest Hall for meetings, receptions and other events.

Friends of Hopkins

BY JIM KADERA

Friends of Hopkins, a new fund raising arm of Forests Forever Inc., is off to a good start. Individuals and families who support the natural resource programs at Hopkins Demonstration Forest donated \$6,215 by the end of 2012, considerably more than given during unnamed "membership drives" in recent years.

Mike Bondi, Forests Forever chairman, and other board of director members decided it was time to put more emphasis on community support for on-going programs at Hopkins. With our community asked to donate for construction of Forest Hall, formal membership drives were downplayed. Forest Hall was completed and opened for use last year.

Friends of Hopkins began late in 2012 with a mailing to past supporters. "Since the inception of Forests Forever and Hopkins, we've relied on the community and thousands of volunteers to make this place happen," Bondi said. "It's a unique all volunteer, non-profit organization. So this was a natural outgrowth.

"We wanted to formalize our process. Now we'll have an annual appeal in the late fall to past supporters and new people. We'll use the money to sustain our operations. We have the potential to reach out and serve more people in the community."

Forests Forever expects Hopkins use to swell as people use Forest Hall and learn about all that Hopkins has to offer. Friends of Hopkins will supplement income received from a consortium of corporate and other business givers and from periodic commercial harvests of Hopkins stands.

Bondi said he and two other members of a committee will plan the next Friends appeal aimed at several groups. "Our goal for this year is \$10,000, but I'd like to try for \$15,000," he said.

If you missed the recent outreach opportunity to donate in support of education programs at Hopkins, please contact Ken Everett at 503-655-5524 to arrange to make a donation. Any amount is helpful. Thank you.

SAVE THE DATE

Forest of Arts

October 12-13

Community celebration of forest through art

MORE INFORMATION COMING SOON

Iron Ranger

BY JIM KADERA

Hopkins Demonstration Forest soon will have a new way for visitors to contribute cash to support its programs and maintenance. The Oregon Corrections Enterprises has donated an "iron ranger" made by state prison inmates that will stand at the information kiosk near Hopkins Hall.

The heavy-gauge steel donations box has a base that will be set in concrete for security, Ken Everett, Forests Forever executive director, reported. Some state parks use iron rangers to collect user fees. "The rangers are a square steel tube with an insert that slides into the tube from the top for money collection. The insert is secured inside the tube with a chain and lock," he explained.

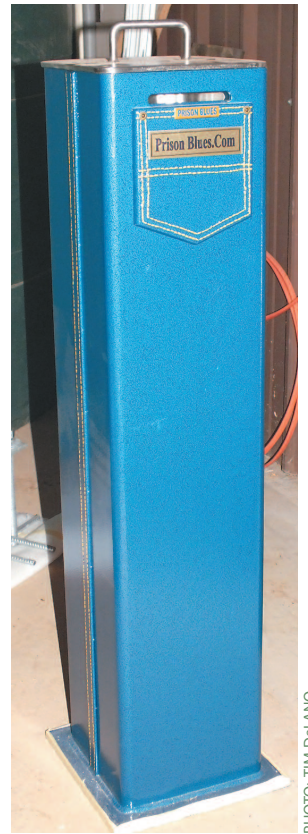


PHOTO: TIM DeLANO

In Remembrance

Forests Forever Inc. lost one of its best friends when Norma Ramsay, 90, died Jan. 13.

Norma was the lifetime partner of Clyde Ramsay, who died in 2005, in their woodland and Christmas tree business near Molalla. More recently, she was a major contributor in funding the construction of Forest Hall at Hopkins Demonstration Forest.

"My mom wasn't one to toot her own horn, but she was a partner with my dad in the tree farm business in every sense of the word," said daughter Ilene Waldorf. "I felt a little bad for her as daddy got all the recognition. She even wrote his testimony (supporting woodland interests) at the legislature."

Waldorf said her mother "loved to burn brush piles just like a pioneer woman. She taught my sister and I the values of hard work. She was artistic, too." Survivors include Waldorf and her sister Janet Martin, both of Molalla; granddaughter Amy Cox, and five great-grandchildren.

Mike Bondi, Chairman of the Board of Directors for Forests Forever, Inc. and owners of the Hopkins Demonstration Forest, said, "This community lost a great friend with Norma's passing. In many ways, this marks the end of an era. Both Clyde and Norma were at the very forefront of a movement that brought together private family forest owners from around the state and recognized the special contributions from these tree farms, the role they play in Oregon's economy, and our quality of life."

Norma wanted no funeral or memorial service; she was buried next to Clyde at Adams Cemetery. But her support of sustainable natural resources and the Hopkins Forest lives on. Contributions can be made to Forests Forever, Inc. for their Forest Hall landscaping fund by sending a check to Ilene Waldorf, PO Box 214, Molalla, Oregon 97038.

Calendar

Community Forestry Days (CFD)

2nd Saturday Each Month, 8:30am-4:30pm. These family-friendly community events include volunteer projects that vary depending on the season. Lunch is provided for volunteers, often including a brief topical program. A tour or demonstration activity is offered in the afternoon for the community to see what we're up to.

Community Forestry Days begin at 8:30 am (stay as long as you are able); lunch at noon; tour begins at 2:00 pm; clean-up and depart by 4:30pm. Please RSVP to 503-632-2150 by the Thursday prior to each CFD if you plan to join us for lunch or the tour. Thank You.

April 1-5: Oregon Arbor Week

Celebrate Trees with a Ten Trees Tour offered at 10am and 2pm during Arbor Week ONLY! Learn the names and stories of at least ten native trees growing at Hopkins Demonstration Forest. 90-minute walking tours follow a 1 1/2 mile route on forest roads and trails. Schedule a tour for your class, community group or family; or download the Hopkins Trees List from our website to guide your own tour.

April 13: Spring Clean-out, Dig-in

This April will be a day full of lots of little things to do in and around the shop, perhaps around Forest Hall, and maybe out on the trails. Call during the week prior to April 13 to check on chores and reserve your place at the lunch table.

May 11: Trail Tenders

After the wet & stormy seasons, our trail network needs attention. If you enjoy using the trails at Hopkins, this is a perfect fit for your interests, and a good time to help. Before the day ends, we need help setting up the canopy outside Hopkins Hall.

June 8: Fire Wise and Fire Safe

Living on the edge of the forest, in homes nestled amongst the trees can be inviting or frightening, depending on how defensible is your space. This Community Forestry Day is half workshop about "how-to" assess and reduce fire risks at your own home, and half volunteer day. Help protect the valuable forest and facilities at Hopkins by volunteering to reduce and remove fire hazards in our Fire-Safe Demonstration Project.

July 13: Woodland Summer

Whether your family owns a woodlot or not, you can enjoy some of the sights, sounds and sweat that go into managing a forest. No telling what chores will remain in mid-summer, stay tuned. Call during the week prior to this CFD to confirm your role in a project. Thank you.

Upcoming Community Events in 2013

August 10: building maintenance, paint and stain

September 14: last chance for summer chores

October 12-13: Forest of Arts

Pedee Property continued from front page

stewardship management plan," he said. "We'll need to widen and rock the narrow dirt roads so we have access and parking spots." The road work will be financed by a commercial timber thinning.

A key in making Pedee a success, he emphasized, will be to contact local people (in Polk County) to serve on a committee to advise Forests Forever on management decisions. The advisors might include representatives from the county woodlands association, Oregon Department of Forestry, Oregon State University Extension, and the local soil and water conservation district, he said. Everett favors the Forests Forever expansion to provide natural resource education to more communities.

The only up-front cost of taking over Pedee was to pay \$289 in county property tax due for 2012, and to reimburse Terry Lamers, a former Pedee board member, \$1,170 for earlier property tax he paid while the non-profit was inactive.

Sharon Phillips will receive 20 percent of net income from any wood product harvest at Pedee. The net is after harvest costs have been subtracted. After she dies, all wood product income will go to Forests Forever. It was also agreed that Forests Forever retain the name of Pedee Woodlands in honor of the effort Bob Phillips made to establish the non-profit.



P.O. Box 1320

Oregon City, Oregon 97045