



FORESTS FOREVER, INC.

ANNUAL REPORT 2021



Executive Director Message

2021 at Hopkins started out quiet, which soon changed with the ice storm we had in the spring. Trees were tipped over and our roads and trails were littered with limbs and debris. Most of the alder trees had the tops broken out. We organized several “Chip O Rama” Saturdays to help clean up all the mess. Many of our volunteers, including some new people to Hopkins, came out and helped to pull the limbs to the road where others fed the debris into the chipper.

There were major improvements that were accomplished to the trail system in 2021 thanks to a \$53,000 grant from Travel Oregon. Portions of the trails were reconstructed to remove hazardous roots and rocks to improve safety, and then the trails received a healthy coating of new gravel. Three bridges received new treated decking and some of the wooden stairs were replaced that had rotted away.

There are now new and improved trail brochures at the kiosk across from

Hopkins Hall. This includes a new and detailed map of the property showing all the features available for visitors to see.

After two years of the education program being shut down due to COVID, bus loads of students started returning to Hopkins this past fall. It was great to see their excitement as they were able to hike in the woods again.

Another big change at Hopkins—the old manufactured home is gone! Many volunteers worked hard to remove the porches and skirting so it could be ready to move. The plans have begun to build a new Outreach Center to house the Forest Host and provide overnight accommodations for visiting educators, in addition to a conference room and office space.

There are many exciting things coming in 2022 at Hopkins and the Schink Demonstration Forest, located outside of



Molalla. Please take some time and visit the properties to learn more about the new projects and educational programs coming up!

A heartfelt thank you to all the volunteers, Education Consortium members, Friends of Hopkins, and our Special Project Sponsors for their donations of time and money. In order to continue providing a quality education program at no cost and keep the gate open to the community, we depend on these donations as a non-profit organization.

Ken Everett, Executive Director
Forests Forever, Inc.

A Special Thank You to the 2021 Forests Forever Education Consortium Members

*Partners with Oregon State
University's Clackamas Extension
and 4-H Service District*

Oregon Forest Resources Institute

RSG Forest Products

Port Blakely Tree Farms, Ltd.

A.J. Frank Family Foundation

Walker Family Foundation

Campbell Global, LLC

Starker Forests, Inc.

KeyBank Foundation



Ken Nygren, forester and pole buyer, sharing his knowledge about growing, harvesting, and marketing Douglas-fir pole timber at Hopkins Demonstration Forest.

YEAR IN REVIEW...

EDUCATION & PUBLIC OUTREACH

The year 2021 ended looking a little more “pre-COVID normal” with school and youth groups returning to in-person learning and extending their classrooms back into the forest at Hopkins. The months of October through December saw 47 groups ranging from upper elementary, high school Career Technical Education, Community College, Portland State Capstone, and public tours.

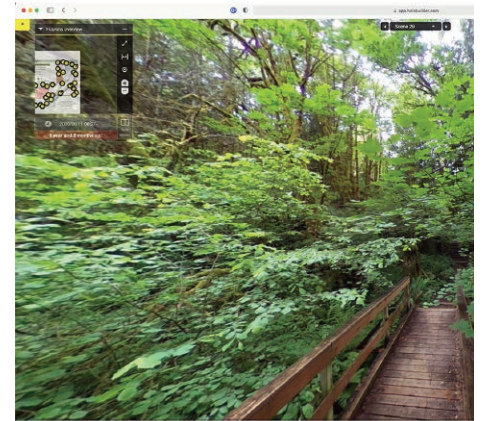
Also, Hopkins received funding to conduct a summer enrichment program through the Oregon Community Foundation. During July and August more than

By comparison, during the first six months of 2021 most education was focused on remote learning and developing tools for online teaching with students confined to the classroom. In April, a 23-part video series on “What is a Forest?”

“What is a Forest?” now available on the Hopkins Demonstration Forest YouTube Channel:
<https://www.youtube.com/channel/UC7ZBn5PyK3vG-vAlFaJitSw>

was concluded with a virtual timber cruise and online stand inventory activity. Many of these videos continue to be used by teachers with plans to add more videos in this series during 2022.

In addition to the videos, both the Hopkins and Schink Demonstration Forests were set-up with 3-D virtual field trips thanks to a partnership with a Portland State University’s Senior Capstone Course. Faculty advisor, Rick Hugo, and a team of graduating seniors spent many hours out in the forest capturing 3-D images, photos, videos, and sounds to build a tour and lesson plans that teachers and students could access remotely—bringing the forest to the classroom. As a preparation for actual student forest visits, the 3-D virtual project effort is a valuable tool to familiarize students and teachers before they arrive in the woods.



1,000 youth and adults attended outdoor activities focused on Oregon’s forests and the core benefits they provide—Economic, Environmental, and Social values. A majority of these youth came from underserved communities and school districts that struggled during the pandemic with remote learning. In addition to the youth enrichment, twelve high school teachers were able to attend a shortened *Teacher in the Woods* program that focused on the OSU College of Forestry’s Mechanized Harvest Simulator Laboratory in a pilot program to connect high school youth to careers in forestry, industry professionals, and opportunities at OSU.

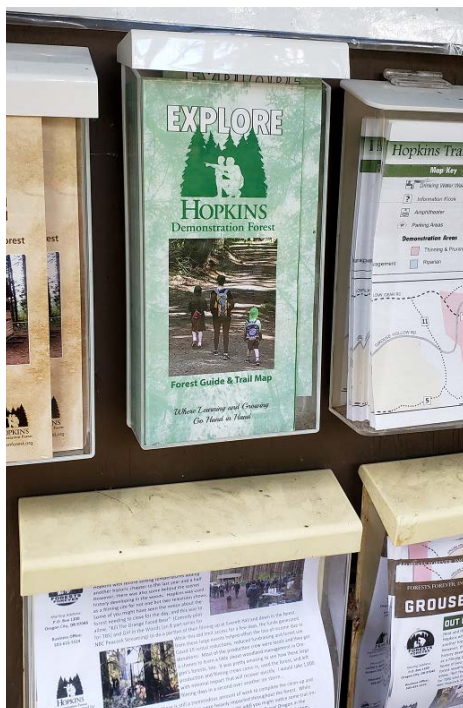


See 3-D Virtual Field Experiences (VFE) at the Hopkins and Schink Demonstration Forests...

Hopkins VFE:
<https://app.holobuilder.com/app?p=5720109443186688&m=player&s=556100967&d=1v48>

Schink VFE:
<https://app.holobuilder.com/app/?p=0e-7a64ff-b12d-46b5-86de-4fb5dfcb950&m=player&s=1635270849138&d=2i50>

Lastly, a major accomplishment this year for public outreach was the publication of the new Hopkins Forest and Trail Guide. Rather than a map with trail names and brief descriptions, the new guide (with a new map) highlights the different management areas, education efforts, and facilities. Visitors now have a better understanding of the different silvicultural treatments and trail descriptions to provide insight for their surroundings as they move through the forest. This new Guide complements the trail improvements that were accomplished through a Travel Oregon Grant that expands access to a broader group of users with better trails and, now, clearer and comprehensive interpretation.



MORE HIGHLIGHTS FROM 2021

- The monthly *Community Forestry Day* continued on the second Saturday of each month. While turnout was lower than pre-pandemic times, we accomplished a number of big projects including ice storm damage clean-up, heat dome seedling survival surveys, and sawmill training. **PLAN TO JOIN THE FUN. FREE LUNCH PROVIDED OUR VOLUNTEERS WORKERS—CONTACT PETER TO RESERVE YOUR SPOT.**

- Volunteer Host Program is getting up and running, again. And, beginning to build momentum. The Historic Clatskanie Mountain Lookout Tower was re-opened to the public in July. Trained and dedicated volunteer, Mark Triebwasser, Canby, has been our Tower host for public tours on the 1st Saturday of every month. Plans include expanding public access with more volunteer support.

- The Poppino Pavilion was opened

for public use this past summer with a dedication in June. The Pavilion, recognizing John Poppino—one of Forests Forever’s charter Board members and instrumental in establishing the organization and providing early leadership for many of the programs—is an important meeting and gathering space for groups coming to Hopkins for their day in the forest.

- Successful fledging of the Future Natural Resource Leaders (FNRL) organization with their own non-profit 501 (c) 3 status and now managing independently to serve more than 3,500 high school students studying forestry and natural resources at 35 schools across the state. A special thanks to our own Peter Matzka and professional colleague, the late Rob Waibel, for creating the vision to make this all possible. Rob passed away in April of 2020.

BOARD OF DIRECTORS & STAFF

Our volunteer Board of Directors has the overall management responsibility of the Hopkins Demonstration Forest plus the legal and fiduciary oversight of Forests Forever, Inc. The Board meets monthly to conduct business.

BOARD OF DIRECTORS

(Member, Board Since, Representing)
Ken Everett, 1991, Forest Consultant, Executive Director, Colton
Frank Wille, 2012, Woodland Owner, Board Chair, Oregon City
Mike Piazza, 2007, Business Community, Board Treasurer, West Linn
Maralyn Turner, 2019, Education, Board Secretary, Estacada
Glenn Ahrens, 2012, OSU Extension Service, Extension Forester, Oregon City
Mike Bondi, 1991, General Public, Lake Oswego
Mary Castle, 2008, Forest Products Industry, Molalla
Michael Daly, 2010, General Public, Beavercreek
Mike Haasken, 2013, Oregon Department of Forestry, Stewardship Forester, retired, Molalla
Pam Hayden, 2018, General Public, Lake Oswego
Kimberly Johnson, 2017, Business Community, Milwaukie

Jim Kadera, 2006, General Public, Hillsboro
Bob Kahl, 2014, CCFFA Representative, Oregon City

STAFF

Peter Matzka, OSU Extension Forestry Educator—Hopkins Demonstration Forest
Don Chase, Special Projects

MAILING ADDRESS: Forests Forever, Inc., P.O. Box 1320, Oregon City, OR 97045,

Business Office Phone: 503-655-5524

HOPKINS DEMONSTRATION FOREST: 16750 S. Brockway Rd., Oregon City, OR 97045, Tree Farm Phone: 503-632-2150
www.demonstrationforest.org

FB: www.facebook.com/HopkinsDemonstrationForest

EDITOR: Mike Bondi

CONTRIBUTORS: Peter Matzka, Glenn Ahrens, Pam Hayden, and Ken Everett

LAYOUT AND DESIGN: Minten Graphics

We sincerely thank longtime board members Mary Castle, Jim Kadera, and Kimberly Johnson for their service on the board. All three retired at the end of 2021.

FOREST LANDOWNER EDUCATION

In a normal year, OSU Extension Forestry, Forests Forever, Clackamas County Farm Forestry Association, and other partners organize a wide variety of landowner education programs utilizing Hopkins Demonstration Forest. These events feature how-to-techniques for planting, weeding, thinning, harvesting, roads, wildlife, and riparian area management—to name a few topics. Bigger events include field classes for the annual Clackamas Tree School, and special events such as the Selling Logs Symposium (2018). Unfortunately, the COVID pandemic and restrictions on public events put a big damper on our usual slate of programs this past year.

During the COVID times of 2020 and 2021, OSU Extension and our partners

in forestry education pivoted to online education via webinars and virtual video tours. These online programs have been successful and provided easy access to many people who did not have to make the trip for an in-person event. In terms of the number of participants and “learner-hours”, we often exceeded the numbers we get at in-person events. These online events also utilized examples and stories from Hopkins Demonstration Forest. But, of course, it’s not the same as the in-person experience—and, out in the forest!

More information on upcoming forestry education events is available by subscribing to the *OSU Woodland Notes* newsletter and monthly *Forestry Corner E-news* at <https://beav.es/4JU>.

Back in the Woods... Pole Management Demonstration Area

Part of what we call the Hillside Forest stand at Hopkins Demonstration Forest has been managed with periodic thinning over 30 years in order to produce high-value pole timber. The idea is that periodic light thinning will maintain tree crowns and growth rates to produce tall, large diameter trees with medium taper. This type of Douglas-fir tree is a good candidate for making utility poles (for power transmission lines) and the dollar values for these extra-long logs are generally much higher than that for normal sawlogs. The pole stand at Hopkins is now about 85 years old and many of the trees have potential to make poles of 90 feet or longer.

The pole management demonstration area at Hopkins is due for another thinning and we plan to extract high-value utility poles in 2022. Ken Nygren, consulting forester for White Oak Natural Resource Services and experienced pole buyer, is helping us select and mark pole-quality trees for a timber sale later this year. Ken is also a strong supporter of woodland owner education. At a field workshop in July 2021, he shared his knowledge about growing, harvesting, and marketing Douglas-fir pole timber. Since then, he has marked pole-quality trees for harvesting when we thin this stand later this year. When that time comes, we will hold another educational event at Hopkins to show what is involved with harvesting, yarding, loading and transporting long pole timber.

Back in the Woods...Recovery from Ice Damage

At least 15 acres of young forest stands at Hopkins Demonstration Forest suffered massive damage from the ice storm in February, 2021. Like many landowners in the Willamette Valley area who have damage from fire or ice, we were overwhelmed by the extent of the damage and the need to address it. With help from volunteers, we managed to open our roads and trails over several Community Forestry Days of yarding and chipping the roadside material. But we are just now to the point of managing the larger areas of damage across several young stand management units.

FPI will be demonstrating several treatments options for handling this storm damage debris at Hopkins in 2022. We are planning field tours to share our experience along with the opportunity for other landowners to share their own stories.

After visiting with a contractor specializing in mechanical debris management, we have two main areas lined up for mastication in 2022. One area is the 2.5 acre Red Alder Plantation demonstration Area, which was about 15 years old and heavily damaged by the ice. Another area to be treated is about 5 acres in the Post Plantation where we have been fighting to bring Douglas-fir saplings up amongst the blackberry brambles that infested the

old Post property. The ice pulled the trees back down into the blackberries and we will have to start over across much of the area. As a part of this project, we will be working with federal funding partners to access the Emergency Forest Restoration Program (EFRP offered by the USDA Farm Services Agency).

Heavy ice devastated the 15-year-old red alder planting at Hopkins Demonstration Forest. This site is planned for cleanup with a masticator followed by replanting and brush control.



GROUNDS & FACILITIES

Molalla Log House

In 2017 Forests Forever, Inc. took stewardship of the Molalla Log House and agreed to make a home for it at the Hopkins Demonstration Forest where it could be enjoyed and interpreted for its unique woodcraft and history. A site was chosen in a clearing near the wetland ponds and the work to bring the rehabilitated logs to Hopkins for reconstruction. Work at Hopkins began in 2019. There have been delays due to the pandemic and fires, but we are on track to finish the building in 2022. Already hundreds of students, hikers and visitors have enjoyed the unfinished building and we all look



forward to a completed project, open and accessible to the general public and with educational information. A brochure, documentary film and interpretive signs have been created to aid in the public outreach and to enhance the visitor

experience. New and improved trails leading to the Molalla Log House are already a boon to the hiking experience!

The preservation and restoration of the historic Molalla Log House began in 2008. With the help of grantors including the Kinsman Foundation, the Clackamas County Cultural Coalition, the National Trust for Historic Preservation, the Paul Bunyan Foundation, plus donations of cash, labor and materials, this 200+ year old building has been preserved for future generations. It has taken over \$440,000 in labor and materials to accomplish this task, much of it funded through grants written by Pam Hayden, FFI Board Member and the project's lead coordinator and historian. Gregg Olson, Molalla, is the head craftsman architect who guided the preservation and rehabilitation of the logs for reconstruction and has been aided by outstanding finish carpenter, Rich Isberg, Molalla—at every step.

Lookout Tower Opens—Volunteers are Needed to Welcome Visitors!

The long journey to complete the renovation of the Clatskanie Mountain Fire Lookout at the Hopkins Demonstration Forest reached the end when the tower opened to the public on July 3, 2021. The public was invited to come out, climb the tower, learn about its history, and the important role of lookouts in detecting and controlling wildfires in past years. The tower has been open to the public the first Saturday of every month since last July. Mark Triebwasser, a retired Weyerhaeuser employee living in Canby, was the tower's host during 2021 and has shared the experience of hundreds of visitors, already!

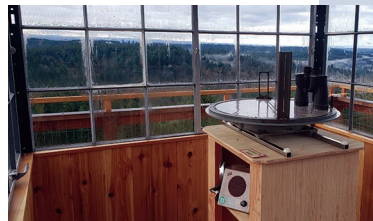
The seventy-five year old tower is on loan from the Oregon Department of Forestry. The tower is approximately 60' tall and has a 7' x 7' cabin atop. Besides enjoying the beautiful views from the cabin, visitors can learn how fire lookouts use a fire-finder tool for spotting and locating the fires.

To help engage visitors to learn more about the tower, the Clackamas County Cultural Coalition, Oregon Forest Resources Institute, and Society of American Fosterers awarded Forests Forever, Inc. grants totaling nearly \$10,000 to prepare and install two interpretive panels that will be developed for display at the base

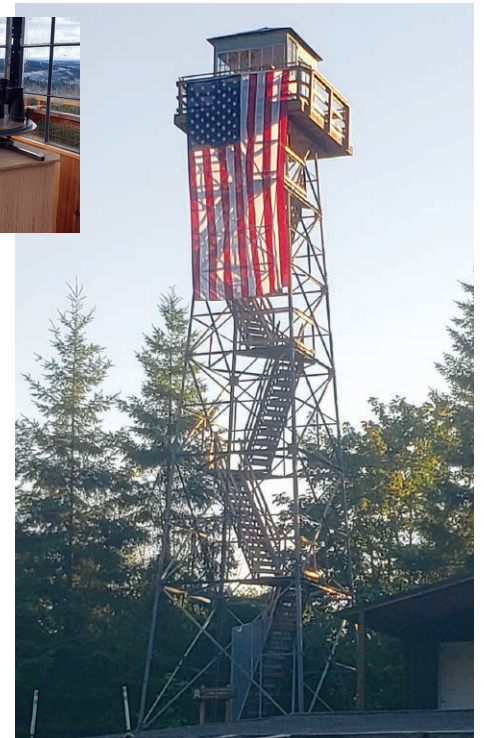
of the Clatskanie Mountain Lookout. The panels will focus on the history of fire fighting in Oregon and how fire towers were instrumental in identifying, locating, and fighting wildfires in Oregon forests before

modern technology. The tower is a prominent landmark at Hopkins—located in the main parking area—and will be another key part of our educational programming that can be available year-round to benefit visitors of all ages.

In order to make the Tower accessible to the general public on weekends, Hopkins will be piloting a volunteer Forest Host program that will provide tours for the Lookout Tower, forest management demonstration areas, as well as, other unique facilities at Hopkins like the Molalla Log House or Mill House on most Saturdays during the peak visitation months (March-October). If you are interested in helping, please reach out and contact us.



From the top of the tower, enjoy the views and learn how to use an authentic Osborne Fire Finder for locating wildfires and sending fire fighting crews.



The Grand Opening of the Clatskanie Mountain Lookout hosting public tours for the first time on Saturday, July 3, 2021.

Otherwise, just come out and enjoy the Lookout Tower and all that Hopkins has to offer!

OUR NEXT BIG PROJECT!

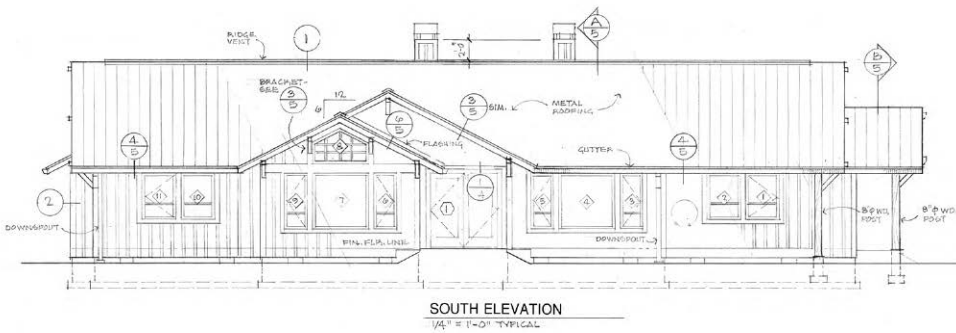
Forestry and Natural Resources Outreach Center— now underway

The old mobile home along our entrance road served us well. The former residence of neighbors and good friends, Norm and Nita Post, has outlived its usefulness. We have rented the home over the years to help pay our mortgage on the property purchase and to have a presence for security.

Our vision has been to build an all-wood Outreach Center that will provide a residence for our caretaker at Hopkins, on one end of the single-story home building design, plus private overnight accommodations with two motel-style rooms at the opposite end of the structure. A small conference room and office area will separate the two ends of the building and



The Saturday Community Forestry Day in November brought together a team of volunteers to begin dismantling the old manufactured home at Hopkins getting it ready for a ride out the gate.



the living spaces. The overnight rooms will be available for visiting teachers, University faculty, and students participating in our education programs, field studies, and supporting research projects at the forest. The Outreach Center design will compliment Everett Hall, include a metal roof, natural western redcedar siding milled at Hopkins from trees harvested at the forest, and exterior cedar log structural features.

During the summer of 2021, the Forests Forever, Inc. Board of Directors made the decision to move the Outreach Center forward at the time. Our hope was to begin construction earlier, but the pandemic got in the way. Now it's time.

FFI Executive Director Ken Everett began working with the Clackamas County Planning Department this past fall. By November, Ken found someone interested



Great winter weather in late January provided the perfect time to dig out and level the site for the new Outreach Center.

in taking the mobile home off the Hopkins site. Once the approvals and permits were finalized, and with dry winter weather, excavation for the site and foundation began.

A fundraising campaign for the Forestry and Natural Resources Outreach Center will begin this spring. The goal is to fully

fund the construction. The “silent” phase of fundraising began last summer and has already raised more than \$250,000 of cash and donated materials—or about one-half of the goal.

MORE INFORMATION COMING SOON!

If you have any questions or would like to get involved, contact FFI Executive Director, Ken Everett at ken@mapforesters.com

2021 FRIENDS OF HOPKINS

Listed below are those making donations to our annual fundraising drive for the *Friends of Hopkins*. This past year, nearly 100 made contributions during the direct mail drive, at the PayPal tab on our website, or left a contribution in our Iron Ranger drop box next to the information kiosk. Collectively, this group contributed \$21,285 in 2021—our largest amount ever! All funds raised help us keep the gate open and the facilities and programs available for your enjoyment. Please join us, if you haven't already, and share this opportunity with someone else you know. If each of us can bring one more contributor, we will double our numbers in 2022. Contact 503-655-5524 for more information.

A sincere thank you to all of our Friends!

Name	Hometown, State	Name	Hometown, State
Addam Piazza	Northfield, IL	Jean Walter	Milwaukie, OR
Amanda Fugate-Moss		Jeff & Cindy Lampa	Silverton, OR
Anneliese Einwaller		Jeremy Shibley	Portland, OR
Barbara Jones	Mulino, OR	Jim & Liz McGrew	Portland, OR
Ben Smith	Silverton, OR	Joan & Michael Moore	Estacada, OR
Beverly Koch	Oregon City, OR	Joan Bryan	Estacada, OR
Bill & Cherie Kennemer	Oregon City, OR	Joe & Laura Daly	Fairfax, CA
Bill Potterf	Grants Pass, OR	John & Kathy Matzka	Oregon City, OR
Bob & Marianne Kahl	Oregon City, OR	John Ellis	Canby, OR
Brooke Riemer		John Fox	Oregon City, OR
Bud & Barbara Baumgartner	Sweet Home, OR	Jon Stewart	Bend, OR
Charlie & Elaine Wilcox	Canby, OR	Judson Parson	Eugene, OR
Chris Kleps	Estacada, OR	Judy Greiner	Canby, OR
Clifford Mann	Hillsboro, OR	Judy Shiprack	Oregon City, OR
Cordell Tietz		Julia Victoria B., Salve	
Dale & Julie Bystrom	Molalla, OR	Keith Baldwin	Silverton, OR
Dale Golston	Beavercreek, OR	Ken & Glenda Everett	Colton, OR
Daniel Green	Oregon City, OR	Kent Hempel	Mulino, OR
Dannelle Aleshire		Kevin & Carolyn Kaster	Mulino, OR
David & Nancy Hill	Oregon City, OR	Kevin Lodeen	La Center, WA
David Schultze	Milwaukie, OR	Laura Oldenkamp	Canby, OR
Diane Kelso & Peter Hoffman	Boring, OR	Leah Martini	Lake Oswego, OR
Dick Caldwell	Mulino, OR	Lester & Shirley Farmer	Estacada, OR
Dick Stiles	Estacada, OR	Linda Butts	Oregon City, OR
Don & Virginia Seitz	Milwaukie, OR	Loren Bowman	Estacada, OR
Doug & Stella Shannon	Molalla, OR	Lyna Low & Frank Wille	Oregon City, OR
Douglas Bingham		Mark Triebwasser	Canby, OR
Elizabeth Daniell	Oregon City, OR	Megan Martini	
Elizabeth Howley	Oregon City, OR	Mike & Connie Bondi	Lake Oswego, OR
Eugene McCoy	Oregon City, OR	Mike Barsotti	Lyons, OR
Francis & Bobbie Everett	Meridian, ID	Mike Daly	Oregon City, OR
Gary Bush	Mulino, OR	Mike Haaksen	Silverton, OR
Gilbert & Barbara Shibley	Estacada, OR	Miss Ursa	
Gregory Cline	Salem, OR	Monte & Ilene Waldorf	Molalla, OR
Hannah Schink	Seattle, WA	Noel Hamel	Estacada, OR
Harvey Bucke Enterprises	Molalla, OR	Norman Hall	Estacada, OR
Jack Carter	Corbett, OR	Northwest Woodland Services	Springfield, OR
James & Alice DeShazer	Coeur d'Alene, ID	Pamela Hayden	Lake Oswego, OR
James & Ardith Hall	Oregon City, OR	Paul & Judy Seifert	Oregon City, OR
Janet Wallinder & Ron Webb	Oregon City, OR	Paul Adams	Corvallis, OR
		Peter & Dian Reed	Dallas, OR
		Rene Pizzo	Oregon City, OR

SPECIAL PROJECT SUPPORTERS

During 2021 the following companies, foundations, agencies and organizations have collectively provided more than \$330,000 to support special projects at Forests Forever, Inc.—making education come alive in the woods!

Weyerhaeuser Company (local high school forestry and natural resource outreach)

Oregon Community Foundation (summer enrichment programs for youth and teachers)

Dosha/Aveda (fundraiser with company's clients to support FFI education programs)

Clackamas Cultural Coalition, Oregon Forest Resources Institute, Society of American Foresters (developing interpretive panels for the Lookout Tower)

Travel Oregon (trail restoration and development)

Kinsman Foundation, Clackamas County Arts Alliance (Molalla Log House)

RSG Forest Products (Forestry and Natural Resources Outreach Center and storage building)

Name	Hometown, State
Richard & Janet Pearson	Sisters, OR
Richard Schwabauer	Portland, OR
Ron Larson	Portland, OR
Russ & Jenn Loeb	Beavercreek, OR
Ruth Conrad	
Ryan Nealon	Portland, OR
Scott Hanson	Happy Valley, OR
Shari & David Sherman	
Susan High	Oregon City, OR
Susan Tate & David Morgan	Beavercreek, OR
Thomas Bauman	Mt Angel, OR
Timothy Dahl	Oregon City, OR
Tom & Julie Handy	Oregon City, OR
Tom Daudistel	Canby, OR
Torry Collins	Molalla, OR
Wade Porter	Canby, OR
Walt & Pat Garvin	Milwaukie, OR
Wilma Guttridge	Estacada, OR

In-kind support from Friends of Hopkins: B&B Leasing (for regular garbage pick up for many years) and the Clackamas County Sheriff and their Community Corrections Program (for providing work crews to assist with forest and facility maintenance)

WHAT TO LOOK FOR IN 2022!

Community Forestry Days

CFD are the second Saturday of every month (8:30am-2:30pm). Come join the fun, help with all kinds of projects, and meet new friends. Lunch provided—call ahead to reserve your spot.

Tree School

Tree School 2022 will be online, again, this year. Advance planning beginning last fall made it not possible to schedule an in-person event in 2022. In-person and in-the-forest classes will be schedule with a number at Hopkins throughout the summer and fall.

OSU's Master Woodland Manager

MWM training begins in April with a number of the sessions planned at Hopkins and in the forest.

FNLR State Convention

Come support high school students from around Oregon for this annual gathering on April 29-30. Technical events will be on the 29th; upper parking lot; 9:00am-2:00pm. Forestry Skills Competition will be on the 30th; Cedar Grove Shelter; 9:00am-1:00pm with awards to follow. Everyone is invited.

Molalla Log House

The historic Molalla Log House expects to be completed this summer with a dedication in the fall.

Clatskanie Mountain Lookout

Planning is underway to add interpretive signage to the Clatskanie Mountain Lookout to complement an expanding schedule for hosted public tours of the tower.

Forestry & Natural Resources Outreach Center

Be watching for the fundraising campaign beginning this spring with the start of construction. Lots of volunteer opportunities are available to get involved and help us raise this building! (See article on page 6.)

A Star is Born?

During 2021, a movie and a TV special were filmed at the Hopkins Demonstration Forest. All the activity did require closing access to the forest property for several days, but the rental income for FFI's hosting was really a blessing during these pandemic times. Our normal wedding and meeting rental income has been greatly reduced the past two years.

Check out the TBS pilot for a comedy called "Kill the Orange-Faced Bear" (to premier in 2022) and a NBC Peacock streaming service program (includes four episodes filmed at Hopkins) named "Girl in the Woods". See if you recognize Hopkins!



It takes a village: the production crew filming on the Olympic Peninsula—a.k.a., the thinning and pruning demonstration area on Grouse Hollow Road!



Everett Hall remodeled to look like a Forest Ranger's office on the Olympic Peninsula in "Kill the Orange-Faced Bear".